



Brockley Road, SE4 | £885,000

02087029999

newhomes@pedderproperty.com

pedder
NEW HOMES

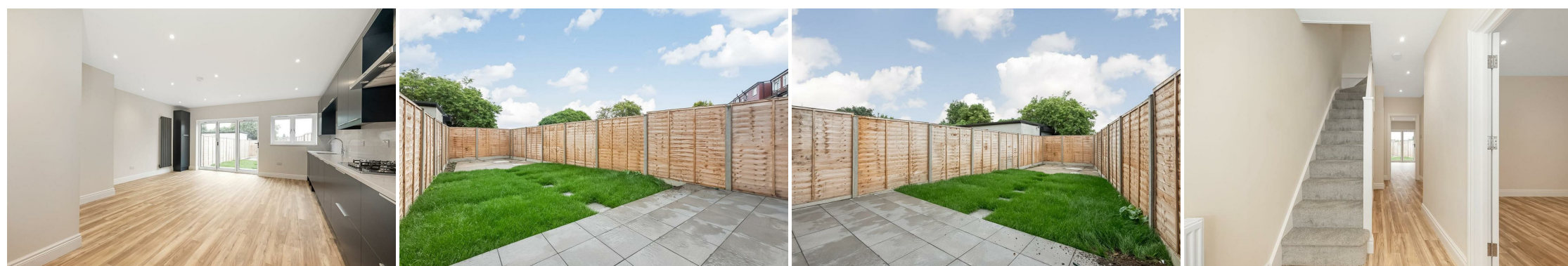


In General

- 4-bedroom family home
- 2 bathrooms and WC
- Driveway Parking
- Large Private Garden
- Newly Refurbished
- Large Open-plan Kitchen
- Crofton Park
- Sleek Bathroom
- Excellent Transport Links
- Close to Coffee Shops and Green Spaces

In Detail

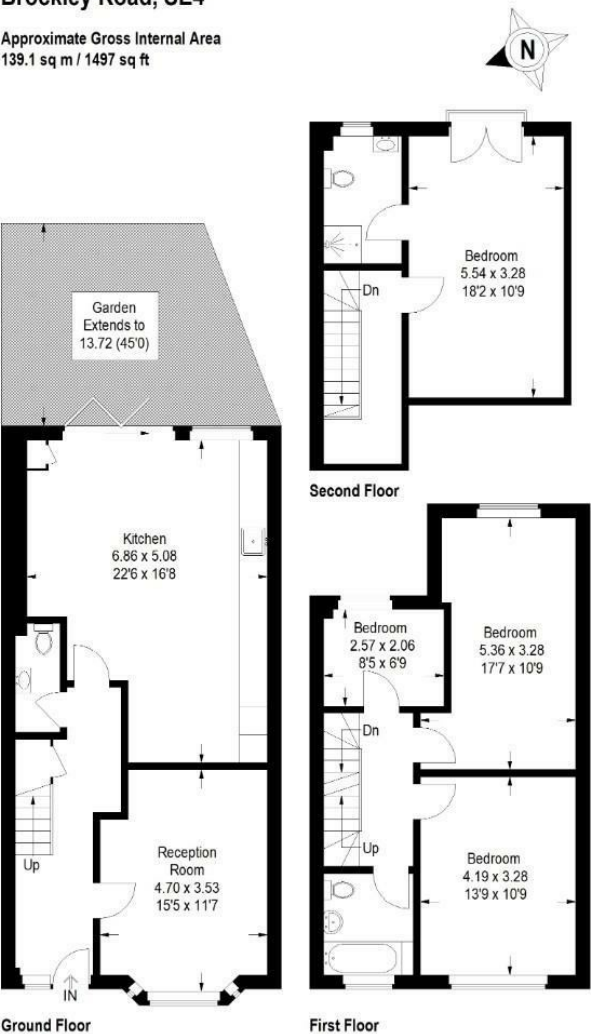
A beautifully refurbished 4-bedroom, 2-bathroom family home in the heart of Crofton Park, with driveway parking and large private garden.



Floorplan

Brockley Road, SE4

Approximate Gross Internal Area
139.1 sq m / 1497 sq ft



Copyright www.pedderproperty.com © 2025
These plans are for representation purposes only as defined by RICS - Code of Measuring Practice.
Not drawn to Scale. Windows and door openings are approximate. Please check all dimensions, shapes and compass bearings before making any decisions reliant upon them.

Energy Efficiency Rating		
Very energy efficient - lower running costs	Current	Potential
102 plus) A		
(81-101) B		
(69-80) C		
(55-68) D		
(39-54) E		
(21-38) F		
(1-20) G		
Not energy efficient - higher running costs		
England & Wales	EU Directive 2002/91/EC	

Pedder Property Ltd trading as Pedder for themselves and for the vendor/landlord of this property whose agents they are, give notice that (1) these particulars do not constitute any part of an offer or contract, (2) all statements contained within these particulars are made without responsibility on the part of Pedder or the vendor/landlord, (3) whilst made in good faith, none of the statements contained within these particulars are to be relied upon as a statement of representation or fact, (4) any intending purchaser/tenant must satisfy him/herself by inspection or otherwise as to the correctness of each of the statements contained within these particulars, (5) the vendor/landlord does not make or give either Pedder or any person in their employment any authority to make or give representation or warranty whatsoever in relation to this property.